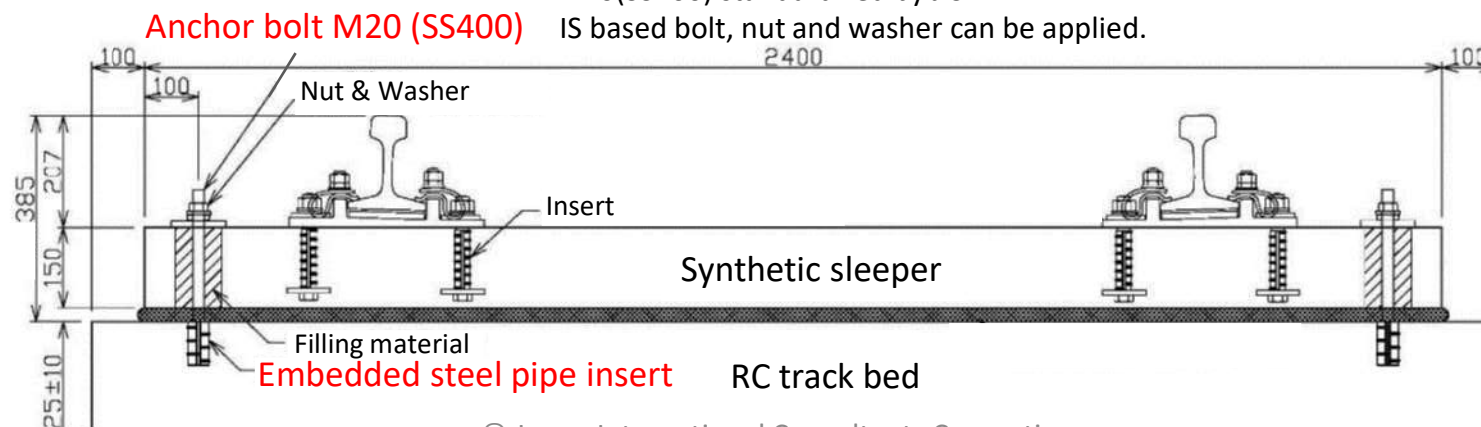
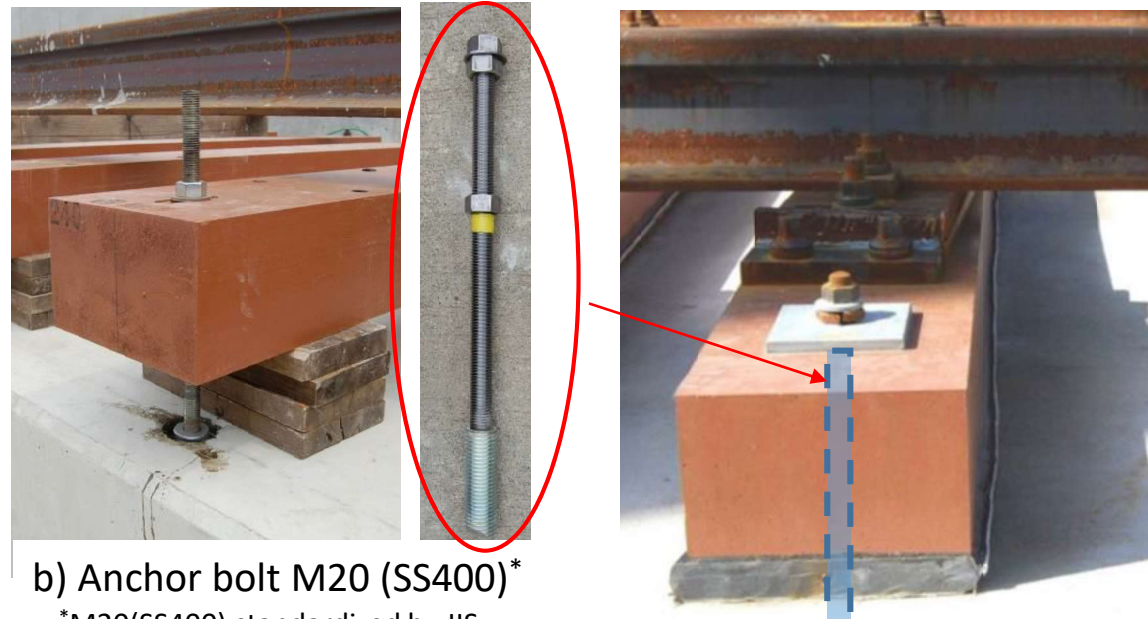
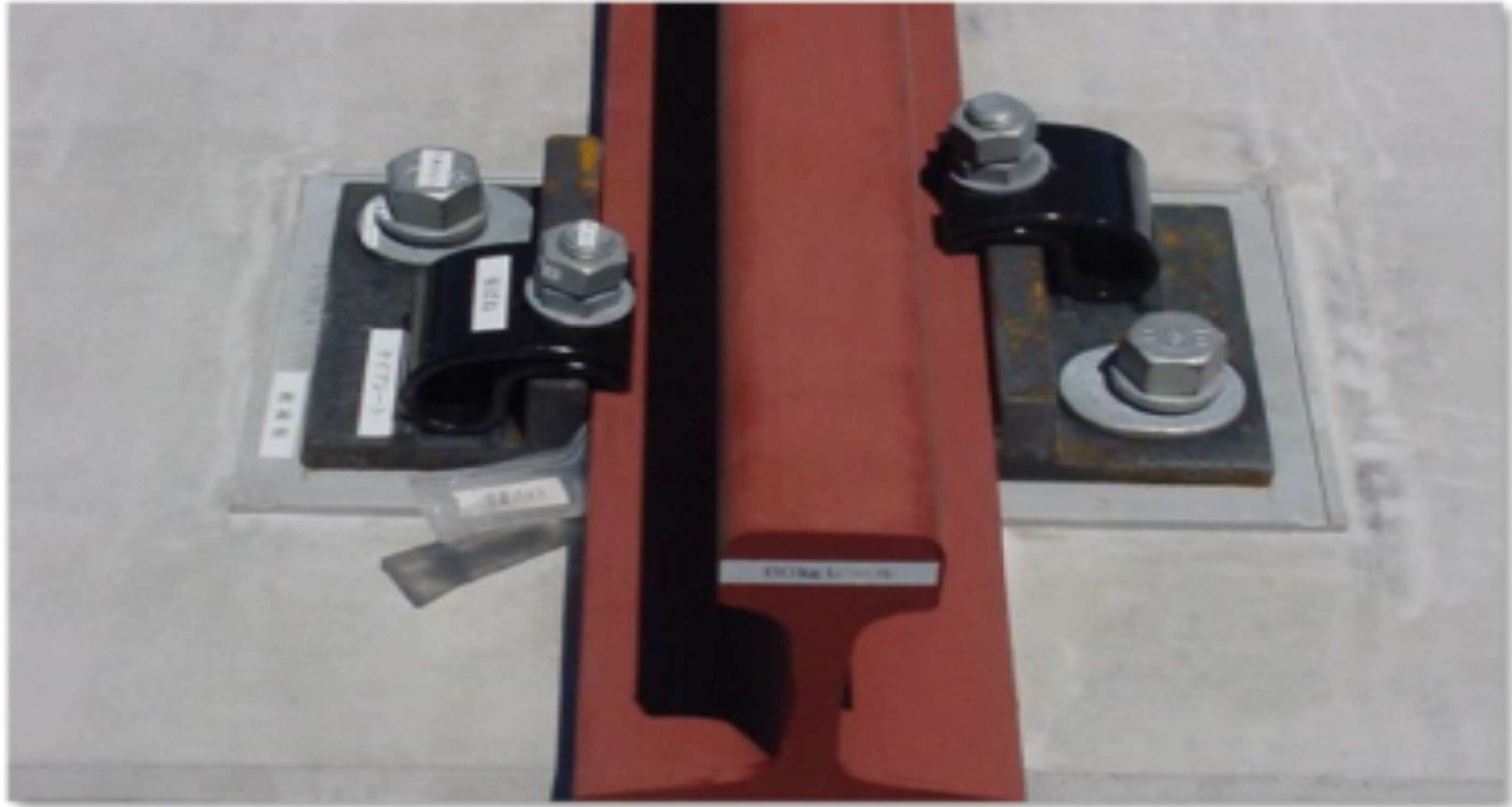


Installation and components of solid-bed track with synthetic sleepers

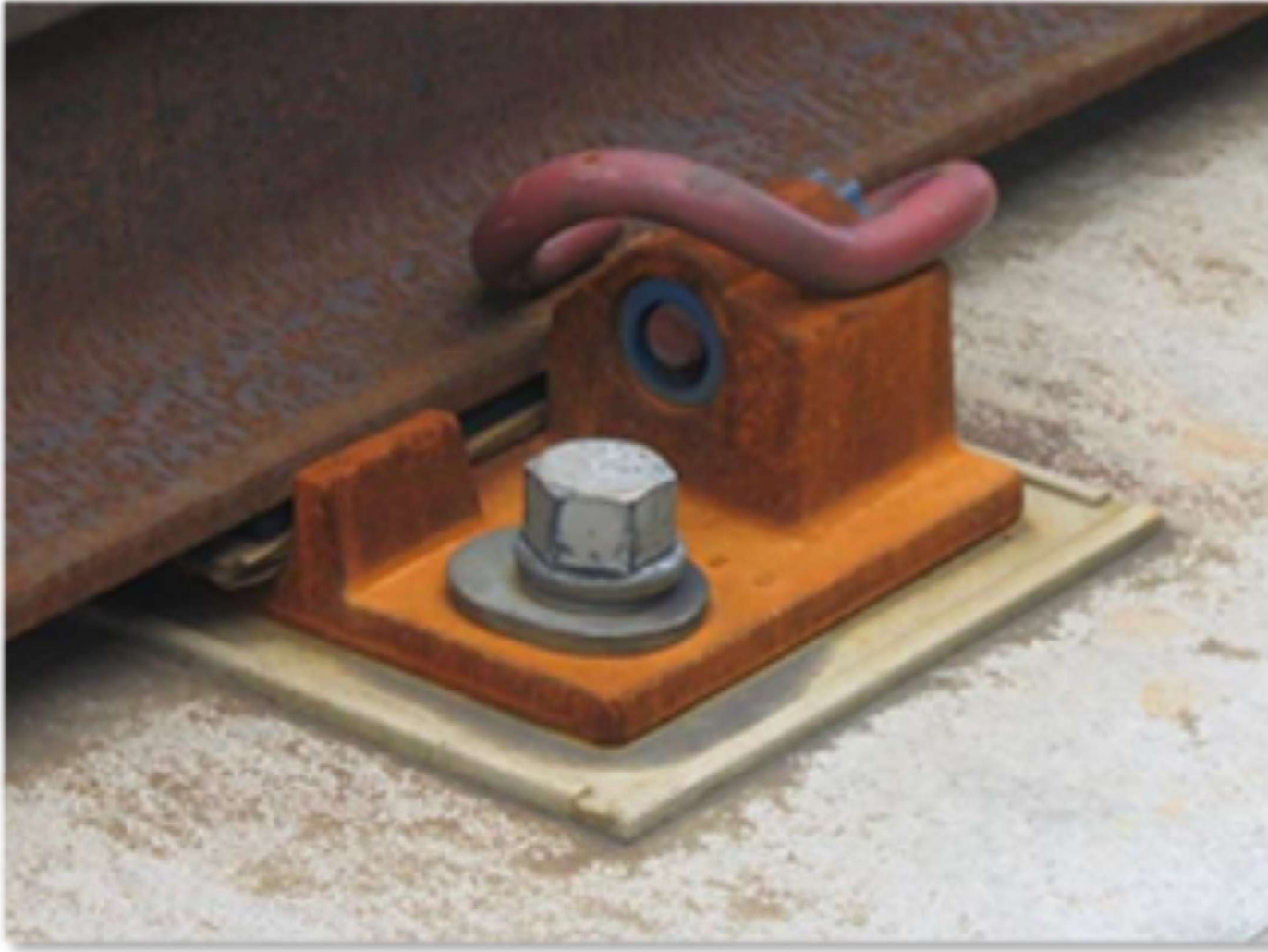
Steel pipe insert & anchor bolt are used for fixing synthetic sleepers on RC track bed.



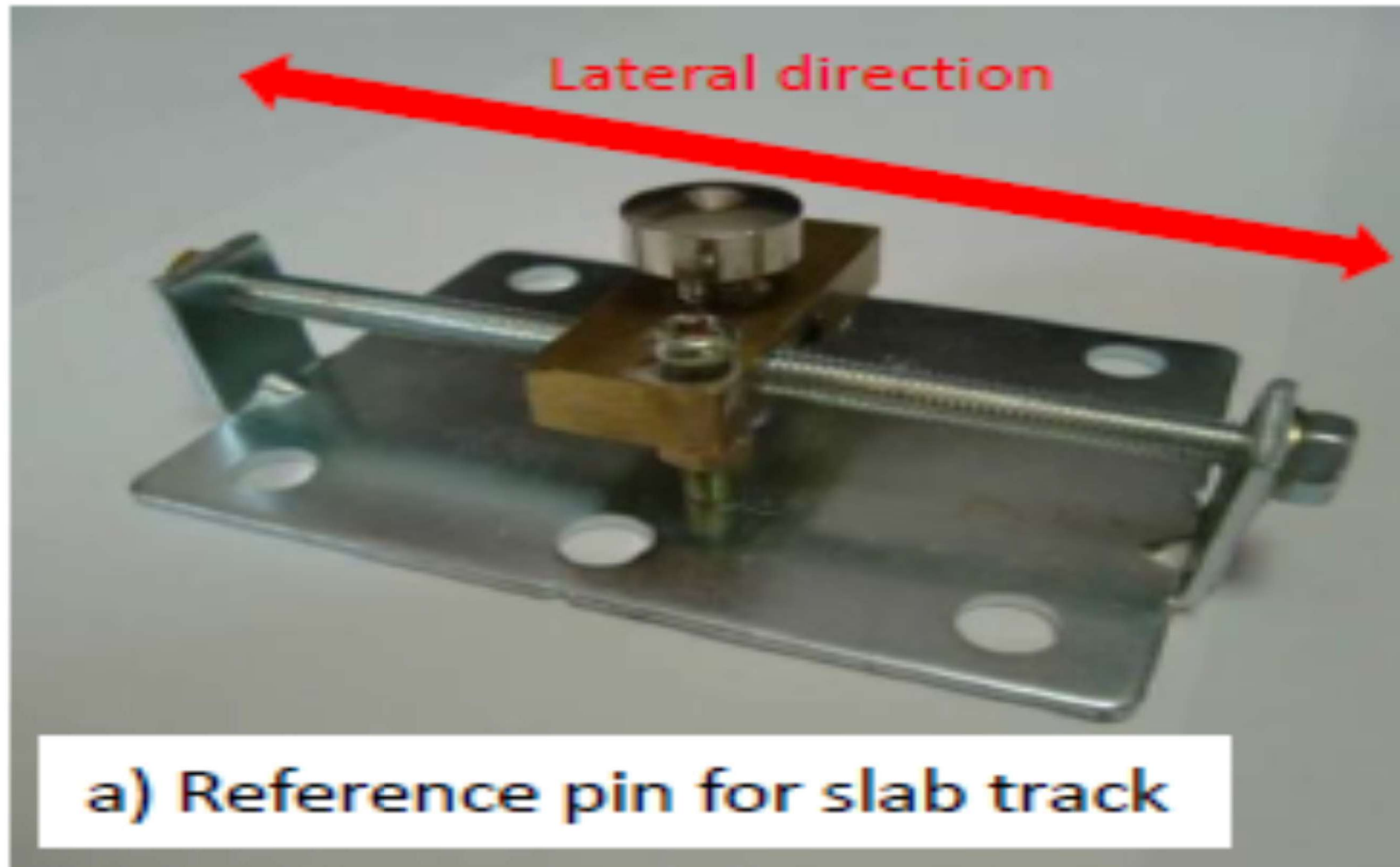
Rail Fastener (Directly-Laid Spring Steel Plate Type 8)



Rail Fastener (Spring Steel Bar type)



Reference pin for survey of slab track and installation



Synthetic Resin for filling around RC Anchor and Adjustable Pad

